



Phone (847) 826-2706
Email info@maxtracktime.com
Web www.MaxTrackTime.com

Circuit of the Americas Testing Event – December 5, 2024

Load-In & Schedule

Waivers & Driver Info All participants must complete the [COTA Electronic Waiver](#) and the [Max Track Time Driver Info & Electronic Waiver](#) prior to arrival. The team captain/registrant is expected to distribute this waiver to all drivers and crew.

Load-In Schedule – Wednesday December 4, 2024 (Map below)

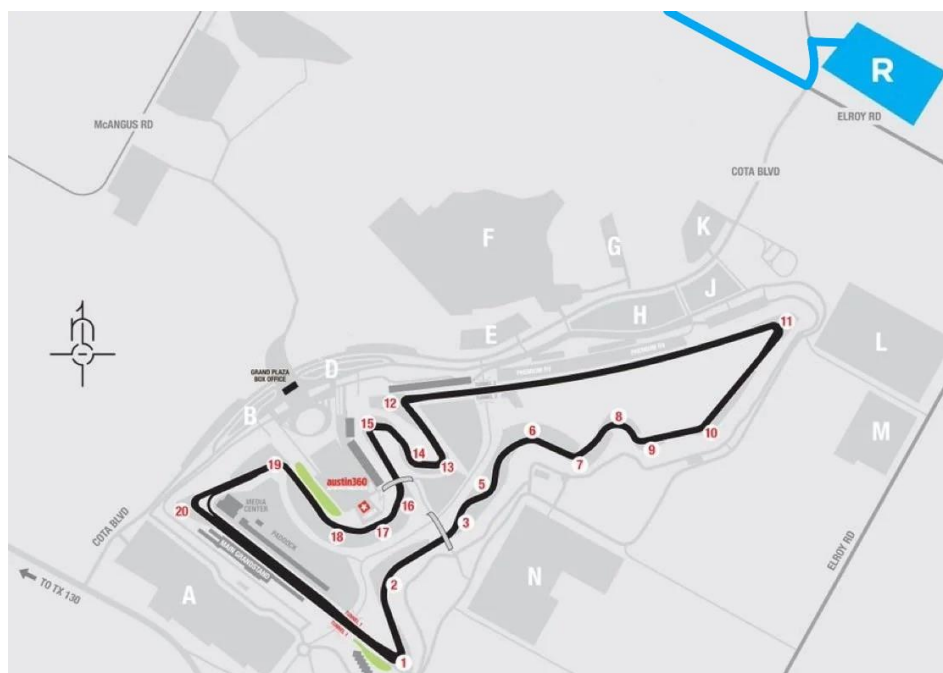
8:00 AM	Staging Opens (Lot R)
10:00 AM	Begin Staging Garage Teams on COTA Blvd. (1 Truck per Garage)
6:30 PM	All COTA Blvd. Trucks Must be Manned & Ready to Load-in
7:30 PM	Load-In Begins in Descending Order (Garages first)
9:00 PM	Assisted Load-In Ends (Self-Directed Load-In Begins)

Arrival & Check-In

Lot R (Elroy Rd. & COTA Blvd.)

[Google Maps](#)

All trucks & support vehicles must report to Lot R for initial staging and Check-In.



Staging

Garage Teams: Starting at 10:00 AM, garage staging will begin on COTA Blvd.

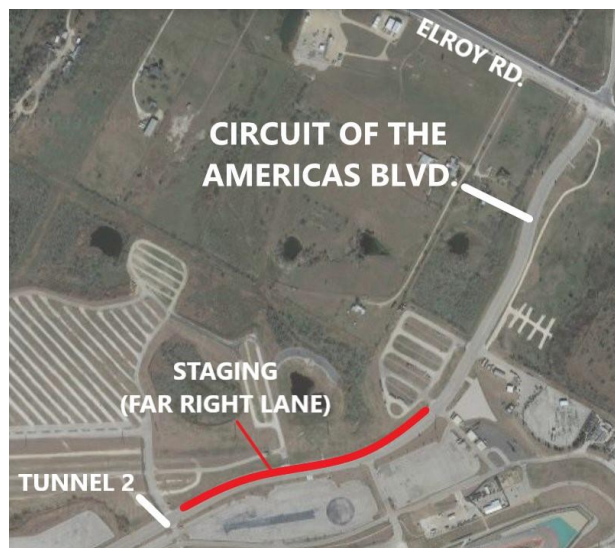
Each garage space has room for a single rig. For teams with multiple rigs, please ensure your truck drivers know which truck needs to be given the garage spot. This rig will be assigned a number and moved to COTA Blvd. for garage staging prior to load-in. Load-in will go into the paddock through Tunnel 2 (see below)

NOTE: TRUCKS ON COTA BLVD. MUST BE MANNED AND READY AT 6:30 PM FOR LOAD-IN. TRUCKS NOT READY FOR LOAD-IN AT THIS TIME MAY BE DENIED GARAGE SPACE.

All other rigs will remain in lot R until garage load-in is complete (approx. 8:30 PM). These rigs will then load-in to the garage overflow section behind the garage parking area. Overflow parking is first-come first-served.

Non-Garage Teams: Will remain staged in lot R until load-in for garage teams has been completed (approx. 8:30 PM). Load-In will be through Tunnel 2 (see below)

Garage Staging (COTA Blvd.)



Note: WRL load in will begin at 3 PM on Thursday, December 5th. Please ensure your rig/equipment is setup in the space you intend to use during the race weekend and is not occupying additional spaces.

Load-Out All drivers/teams not participating in the WRL weekend must exit the COTA paddock by 7:00 PM.



Phone (847) 826-2706
Email info@maxtracktime.com
Web www.MaxTrackTime.com

Garages all Max Track Time participants planning to utilize the pit lane garages must also have a garage reserved for the WRL weekend and will be assigned based off that team's assigned location for the weekend.

RV Camping Reservations Teams wishing to camp at the track on Wednesday night must reserve their spot in the [COTA RV Park](#) through the track [here](#). For teams wishing to camp throughout the weekend, please contact [WRL](#).

Electrical Access Any teams wishing to utilize paddock electrical plug ins for trailers and haulers must purchase access through the track. Please contact Alicia.Prilipp@thecircuit.com to reserve your spot. Please include Max Track Time 12/5/2024 Electrical Access in your subject line. Electrical access in the paddock is extremely limited and subject to availability.

Registration/Driver's Meeting Registration and a short drivers meeting will be hosted in Suite 204 above the garages on Thursday, December 5th. Registration will be open from 7:00 AM – 7:30 AM in Suite 204 with the **Mandatory Driver Meeting at 7:30 AM**. If a driver misses the drivers' meeting, a second meeting will be held at 9:00 AM. Half-day registration will open at 12:00 PM in Suite 204 with a **Mandatory Driver Meeting at 12:30 PM**. All participating drivers must sign in and present or sign the provided waivers at check in. **Please See Minor Driver section below for drivers under 18 years of age.**

Event Schedule

- 7:00 AM – Registration/Check In – (Suite 204 above Garages)
- 7:30 AM – **Mandatory Full-Day Drivers Meeting** – (Suite 204 above Garages)
- 8:00 AM – 8:30 AM – Sighting Laps (35 MPH Maximum. No Race Cars)
- 8:30 AM – 12:00 PM – Open Track (Registered Cars/Drivers Only. No Passengers)
- 12:00 PM – 1:00 PM – Catered Lunch (Suite 204 above Garages)
- 1:00 PM – 5:00 PM – Open Track (Registered Cars/Drivers Only. No Passengers)
- 7:00 PM – All non-WRL participants must exit the paddock by this time

Half Day Schedule

- 12:00 PM – Half-Day Registration/Check In (Suite 204 above Garages)
- 12:30 PM - **Mandatory Drivers Meeting** – (Suite 204 above Garages)
- 1:00 PM – 5:00 PM – Open Track (Registered Cars/Drivers Only. No Passengers)
- 7:00 PM – All non-WRL participants must exit the paddock by this time



Phone (847) 826-2706
Email info@maxtracktime.com
Web www.MaxTrackTime.com

Event Requirements

Cars Entrants are expected to prepare their car for the duties of track driving to the minimum standard outlined in our [Tech Guide](#). Should a car be suspected of not being safe for track use, the organizers reserve the right to deny track access at any point during the event. For questions about eligibility, please contact info@maxtracktime.com.

Drivers All drivers in race cars must have full racing gear including: Nomex Suit, SA2015/FIA2018 or newer Helmet, Racing Shoes, Balaclava, Nomex Socks, HANS device or comparable neck protection. Street car drivers must have a helmet meeting the above specification, long pants, and closed toed shoes. HANS devices are required in street cars with racing harnesses. Failure to have appropriate driving gear will result in denial of track access until appropriate gear is obtained.

MINORS Minors aged 16-17 are permitted to drive provided they have filled out our [minor waiver](#). A legal parent or guardian must either be present, or have the waiver signed, notarized, and presented at the event for the minor to participate.

Minors under 16 must submit a racing license and racing resume to info@maxtracktime.com no later than one month prior to the event for review and approval by Max Track Time. Only upon explicit written approval from Max Track Time will they be permitted to participate in the event.

Track Rules

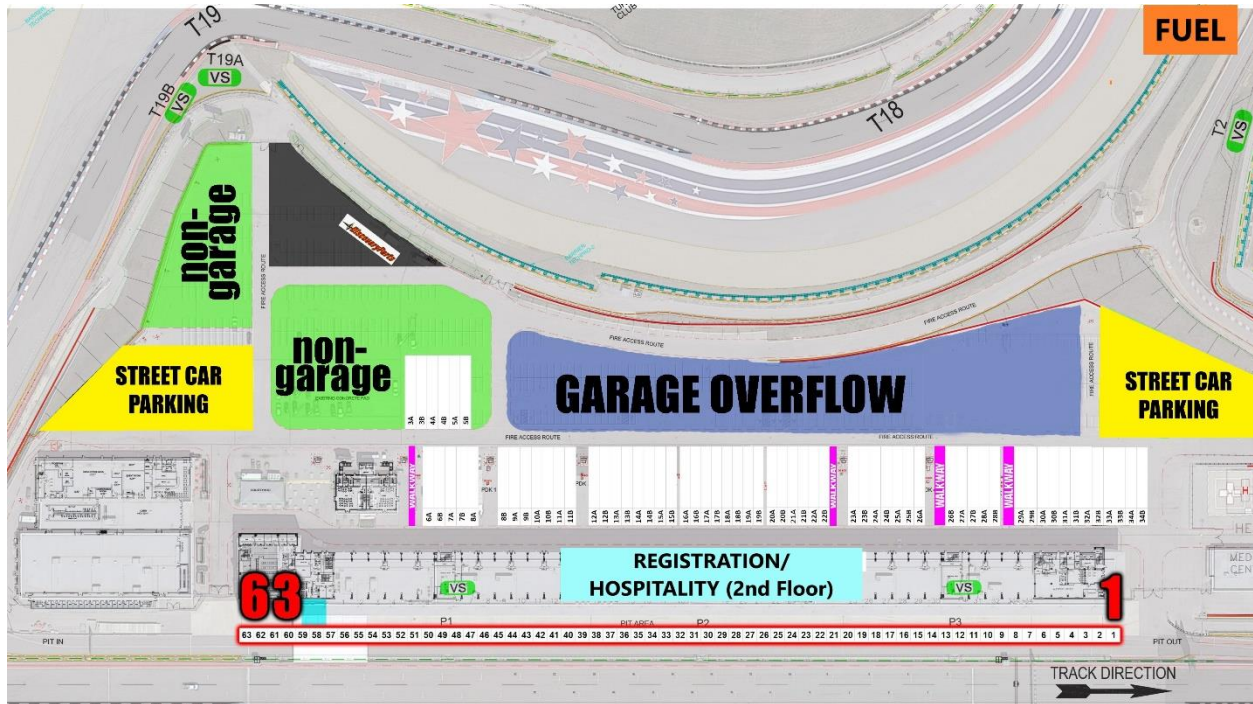
Any scooters must have an affixed and appropriate seat to be operated in the paddock.

All attendees wishing to enter the hot pit area must wear long pants and closed-toed shoes. Improper attire will bar entrants from pitlane.

Minors wishing to be in the pit area, garage area, trackside communications stations, and any other location defined as the "Track Area" must also sign the minor waivers.

TRACK DAMAGE Drivers/teams are financially responsible for any damage that they cause to racetrack property including, but not limited to, tire barriers guard rails and posts. Additionally, any absorbent material used to clean up after spills or fire suppression equipment expended will be billed to the driver of the car. Teams are required to place pads or boards below any jacks, trailer landings, or motorcycle kickstands in the paddock. Failure to do so will result in fees to repair the damaged asphalt.

Paddock Map



Fuel COTA stocks 89, 93, and 101 octane fuel at their on-site fuel station. The pumps accept credit cards and will be open from 7:00 AM – 3:00 PM. For teams ordering fuel, teams must take the barrel with them.

Packages / Shipping Any packages shipped to the track will be available for pickup at Building Y in the south paddock opposite Tunnel 1. Shipping will be open 8:00 AM – 5:00 PM during the event.

Shipping Address:

[Team name / Max Track Time / Phone number]
 9201 Circuit of the Americas
 Blvd, Austin TX 78617

Parts/Gear Support [Discovery Parts](https://discoveryparts.com) will be supporting our event. If any will-call items are needed, please let them know by Wednesday, November 27, 12:00 EST.

Contact Phone: 706-344-1235

Our #1 category for Max Track Time Members:

<https://discoveryparts.com/collections/closeout-products>



Phone (847) 826-2706
Email info@maxtracktime.com
Web www.MaxTrackTime.com

MEDICAL INFORMATION

Facility Medical There will be a staffed ambulance on site for the duration of the event. In the event of an emergency, please alert COTA or Max Track Time staff. The ambulance will be dispatched to your location.

Nearest Hospital:

Trauma Level 2:
St. David's Medical Center
919 E 32nd Street
Austin, TX 78705

Trauma Level 1:
Dell Seton Medical Center at The University of Texas
1500 Red River Street
Austin, TX 78701